



R A I S I N G   T H E   B A R



HARVEST  
PRODUCT RANGE

**2024/25**

# ABOUT US

When you grow up in a farming family there's one thing you come to quickly understand, farmers always find a way to get things done. They're resourceful, driven and determined.

It's this same work ethic that led us to create and build Groundhog Industries, and it's what continues to drive us today.

Launching in 2010 with just 4 products, we have spent 13 years working hard to expand our product range and have earned our reputation of supplying high quality, consumable wear parts to the agricultural industry, nationally.

We've been able to grow with a focus on creative, best-practice solutions and outstanding customer service.

Our vision for Groundhog has always been to help farmers solve problems of efficiency and durability through innovative design.

Through cutting-edge design, Groundhog products are better value per hectare than their competitors. All Groundhog products have been designed and tested to offer maximum protection from wear at the best price. While providing longer lasting wear resistant products we are committed to our customers reducing downtime and replacement costs.

We would welcome the opportunity to discuss how our products can best help you and your needs. Please feel free to drop by our premises in Bibra Lake, call our office, or send an email and let's chat.

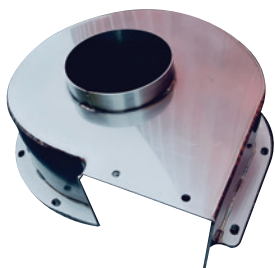


## CONTENTS

HARVEST	STAINLESS STEEL HARVEST PARTS	3-7
	MACDON PARTS / POLY PICK UP BANDS - FOR HAY BALERS	8-9
	SPRINGS - FOR HAY BALERS	
	MASSEY / HESTON / KRONE	10
	NEW HOLLAND / JOHN DEERE	11
	Z RAKE TINES - FOR WHEEL RAKES / PLASTIC WHEELS	12
RUBBER - MOUNTED RAKE TINES	13	

ALL PRICES ARE + GST

# STAINLESS STEEL HARVEST PARTS

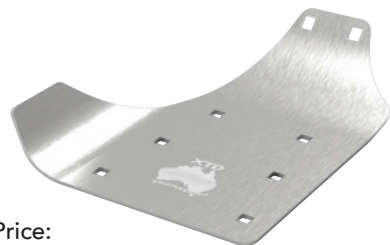


Code: S42-MSS  
 OEM Code:  
 CASEIH4743449  
**CASEIH** VACUUM  
 FAN COVER

Price:  
**\$715 +GST**

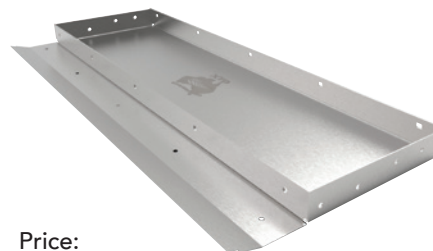


CONVERT FROM  
 POLY TO STAINLESS  
**BETTER WEAR**  
**BETTER VALUE!**



Code: S36  
 OEM Code:  
 CASE IH  
 87541485  
 STAINLESS STEEL  
 4MM LEFT HAND  
 CHAFF SPINNERS  
 FOR **CASE**  
 HEADERS  
 -7130-8240-9250

Price:  
**\$160 +GST**



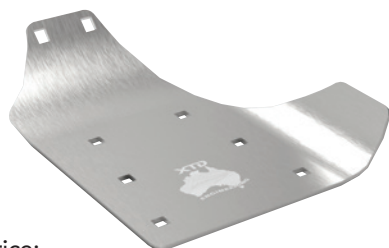
Code: S39  
 OEM Code:  
 CASE IH  
 87730307  
 STAINLESS STEEL  
 REAR FLOOR WELD  
 ASSEMBLY FOR  
**CASE** HEADER SUIT  
 7010-7120

Price:  
**\$1405 +GST**



Code: S118  
 OEM CASEIH  
 87282537  
 STAINLESS STEEL  
 MIDDLE FLOOR  
 FEEDER HOUSE  
 FOR **CASEIH**  
 HEADER.

Price:  
**\$1950 +GST**



Code: S37  
 OEM Code:  
 CASE IH  
 87541487  
 STAINLESS STEEL  
 4MM RIGHT HAND  
 CHAFF SPINNERS  
 FOR **CASE** HEADER  
 7130-8240-9250

Price:  
**\$160 +GST**



Price:  
**\$155 +GST**

Code: S35  
 OEM Code:  
 FOR CASE  
 87047426  
 STAINLESS STEEL  
 6MM MOWER SKID  
 PLATE FOR **CASE**  
 87047426 AND  
**NEW HOLLAND**

Price:  
**\$120 +GST**

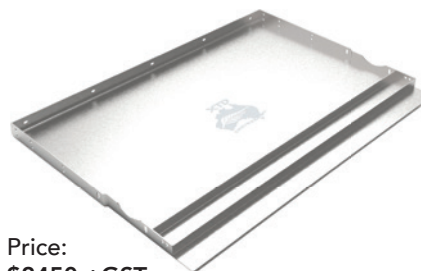


Code: S100  
 CASEIH STAINLESS  
 STEEL SUPPORT  
 BRACKET FOR  
 CHAFF ASSEMBLY  
 SUITS 7230-9250.



Code: S38  
 OEM Code:  
 CASE IH  
 87724571  
 STAINLESS  
 STEEL CHAFF  
 DEFLECTORS FOR  
**CASE** HEADER  
 7120-8120-9120

Price:  
**\$350 +GST**



Price:  
**\$2450 +GST**

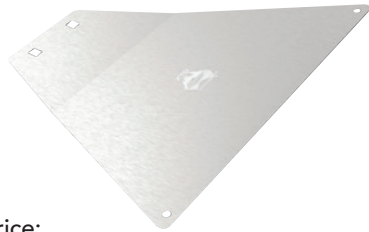
Code: S117  
 STAINLESS STEEL  
 FRONT FEEDER  
 HOUSE FLOOR  
 FOR **CASEIH**

Price:  
**\$2350 +GST**



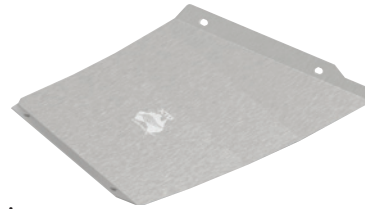
Code: S109  
 STAINLESS  
 STEEL ROTOR  
 COVER FOR  
 REPLACEMENT OF  
**CASE** IH 87492652  
 FITS 7010 - 9250  
 MODELS.

# STAINLESS STEEL HARVEST PARTS



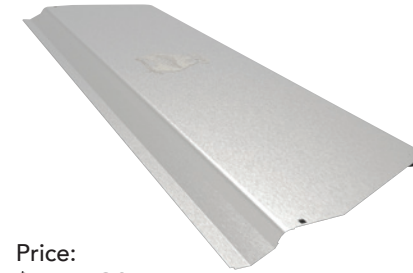
Price:  
**\$218 +GST**

Code: S59  
OEM Code:  
MACDON  
158660  
STAINLESS STEEL  
3MM BOLT ON  
CENTRE SKID  
PLATE SUIT  
MACDON 973-974



Price:  
**\$286 +GST**

Code: S29  
OEM Code:  
MACDON  
165386-5MM  
SKIN  
BOLT ON 5MM  
STAINLESS RIGHT  
HAND SKID PLATES  
FOR MACDON  
D60-FD1 SERIES



Price:  
**\$677 +GST**

Code: S30  
OEM Code:  
MACDON  
220852  
STAINLESS STEEL  
2MM HEAVY DUTY  
ADAPTOR FEEDER  
FLOOR UNDER  
DRUM



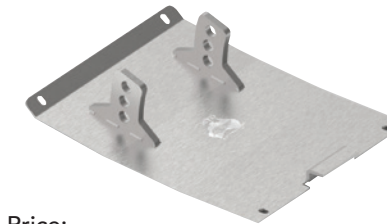
Price:  
**\$187 +GST**

Code: S50  
OEM Code:  
MACDON  
165188-3MM  
SKIN  
BOLT ON 3MM  
STAINLESS LEFT  
HAND SKID PLATE  
FOR MACDON  
D60-FD1 SERIES



Price:  
**\$478 +GST**

Code: S54  
OEM Code:  
MACDON  
172133  
STAINLESS STEEL  
5MM WELDED  
FABRICATED LEFT  
HAND SKID PLATE  
FOR MACDON D60  
-FD1 SERIES



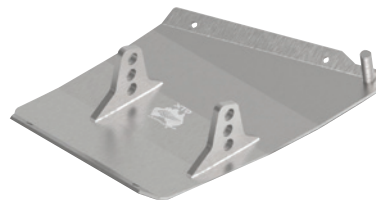
Price:  
**\$416 +GST**

Code: S53  
OEM Code:  
MACDON  
246396  
STAINLESS STEEL  
5MM WELED  
FABRICATED  
CENTRE SKID PLATE  
FOR MACDON D60-  
FD1 SERIES



Price:  
**\$286 +GST**

Code: S28  
OEM Code:  
MACDON  
165188-5MM  
SKIN  
BOLT ON 5MM  
STAINLESS LEFT  
HAND SKID PLATE  
FOR MACDON  
D60-FD1 SERIES



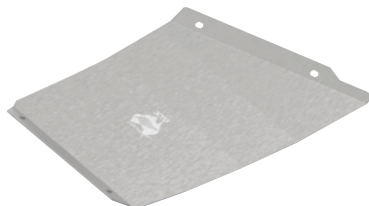
Price:  
**\$478 +GST**

Code: S55  
OEM Code:  
MACDON  
172134  
STAINLESS STEEL  
5MM WELDED  
FABRICATED RIGHT  
HAND SKID PLATE  
FOR MACDON  
D60-FD1 SERIES



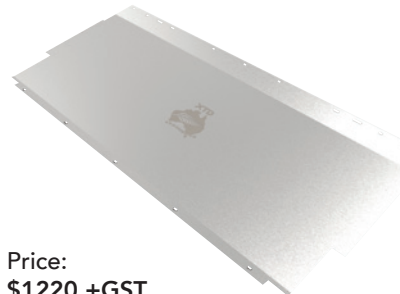
Price:  
**\$190 +GST**

Code: S40  
OEM Code:  
MACDON  
246396-3MM  
SKIN  
STAINLESS STEEL  
3MM SKIN FOR  
XTD246396 PLATE  
SUIT MACDON  
D60-FD1 SERIES



Price:  
**\$187 +GST**

Code: S51  
OEM Code:  
MACDON  
165386-3MM  
SKIN  
BOLT ON 3MM  
STAINLESS RIGHT  
HAND SKID PLATE  
FOR MACDON D60  
TO FD1 SERIES



Price:  
**\$1220 +GST**

Code: S60  
OEM Code:  
MACDON  
220446  
STAINLESS STEEL  
2MM BOTTOM  
ADAPTOR DROP  
PAN MACDON  
CA20 -CA 25



Price:  
**\$285 +GST**

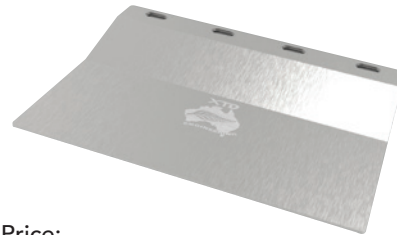
Code: S41  
OEM Code:  
MACDON  
246396-5MM  
SKIN  
STAINLESS STEEL  
5MM SKIN PLATE FOR  
XTD246396 PLATE  
SUIT MACDON D60-  
FD1 SERIES

# STAINLESS STEEL HARVEST PARTS



Price:  
**\$395 +GST**

Code: S31  
OEM Code:  
MACDON  
257096  
STAINLESS STEEL  
6MM MOWER  
SKID PLATE FOR  
**MACDON** R113-  
116 AND KRONE  
EASY CUT SERIES



Price:  
**\$65 +GST**

Code: S34  
OEM Code:  
MACDON  
295218  
STAINLESS STEEL  
CUTTER 3MM BAR  
SKID PLATE FOR  
**HONEY BEE** 4000  
SERIES HEADERS  
FRONT



Price:  
**\$58 +GST**

Code: S205  
STAINLESS STEEL  
TRANSITION  
PAN SKID SUIT  
**MACDON** FD2  
SERIES ONLY.



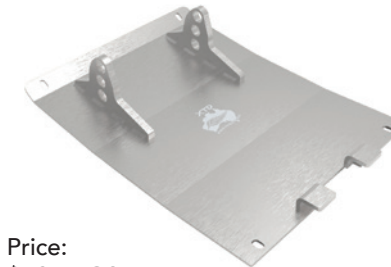
Price:  
**\$1220 +GST**

Code: S60A  
OEM Code:  
MACDON  
287768  
STAINLESS STEEL  
2MM BOTTOM  
DROP ADAPTOR  
PAN FOR  
**MACDON** FD1  
SERIES



Price:  
**\$680 +GST**

Code: S115  
**MACDON** FD1  
AND FD2 SERIES  
STAINLESS STEEL  
FEED DECK FLOOR  
REPLACES OEM  
240246.



Price:  
**\$425 +GST**

Code: S206  
5MM WELDED  
STAINLESS STEEL  
SKID PLATE FOR  
**MACDON** FD2.



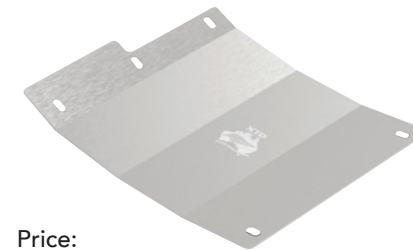
Price:  
**\$99 +GST**

Code: S32  
OEM Code:  
MACDON  
295218  
RIGHT HAND  
PIG TAIL FOR  
XTD287768  
BOTTOM PAN SUIT  
**MACDON** FD1  
SERIES



Price:  
**\$355 +GST**

Code: S116  
STAINLESS 3MM  
WEAR STRIP FOR  
**MACDON** PAN  
287768 SUIT  
STAINLESS AND  
POLY BOTTOM PAN  
EXTENDS LIFE OF  
FRONT OF PAN.



Price:  
**\$190 +GST**

Code: S58  
OEM Code:  
MACDON  
102336  
STAINLESS STEEL  
3MM BOLT ON  
LEFT HAND  
SKID PLATE SUIT  
**MACDON** 973-974



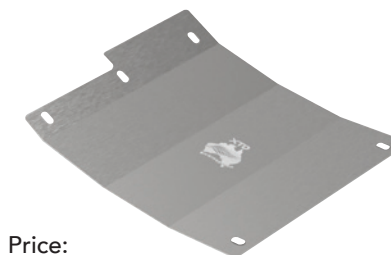
Price:  
**\$99 +GST**

Code: S33  
OEM Code:  
MACDON  
295219  
LEFT HAND  
PIG TAIL FOR  
XTD287768  
BOTTOM PAN  
SUITS **MACDON**  
FD1 SERIES



Price:  
**\$185 +GST**

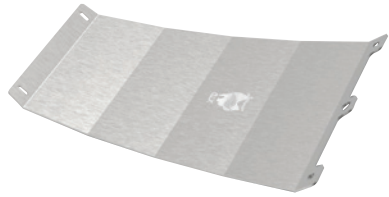
Code: S204  
STAINLESS STEEL  
TRANSITION  
PAN SKID SUIT  
**MACDON** FD2  
SERIES ONLY.



Price:  
**\$190 +GST**

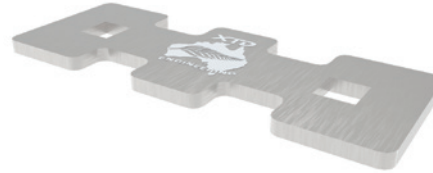
Code: S57  
OEM Code:  
MACDON  
102337  
STAINLESS STEEL  
3MM RIGHT  
HAND BOLT ON  
SKID PLATE SUIT  
**MACDON** 973-974

# STAINLESS STEEL HARVEST PARTS



Code: S52  
**OEM Code:**  
**MACDON**  
**125393**  
 STAINLESS STEEL  
 3MM CENTRE BOLT  
 ON FOR **MACDON**  
 D60

Price:  
**\$190 +GST**



Code: S108  
 NEW HOLLAND  
 DYNAMIC FEED  
 ROLL WEAR  
 PLATE HIGH  
 WEAR PLATE FOR  
**NEW HOLLAND**  
 COMBINES CR7.90  
 TO 10.90.

Price:  
**\$22 +GST**



Code: S119  
 OEM JOHN DEERE  
 HXE87738  
 STAINLESS STEEL  
 3MM CUTTER BAR  
 SKID FOR **JOHN**  
**DEERE** FLEX  
 HEADER FRONTS.

Price:  
**\$58 +GST**



Code: S44  
**OEM Code:**  
**MACDON**  
**129297**  
 STAINLESS STEEL  
 3MM CUTTER BAR  
 KNIFE GUARDS  
 SKID PLATE FOR  
**MACDON** D60-FD1  
 SERIES

Price:  
**\$70 +GST**



Code: S200  
 SUITS JOHN DEERE  
 HINGED DRAPER  
 HEADER FRONTS.  
 STAINLESS STEEL  
 3MM FOR WINGS  
 TO SUIT **JOHN**  
**DEERE** HD40-50  
 R-X-F MODELS  
 - INCLUDES  
 HARDWARE.

Price:  
**\$58 +GST**



Code: S43  
**OEM Code:**  
**MACDON**  
**129297**  
 STAINLESS STEEL  
 CUTTER BAR  
 SKID PLATES FOR  
**PRIMARY SALES**  
 KNIFE GUARDS SUIT  
 D60-FD1 SERIES

Price:  
**\$65 +GST**



Code: S201  
 SUITS **JOHN DEERE**  
 HINGED DRAPER  
 HEADER FRONTS.  
 STAINLESS  
 STEEL 3MM FOR  
 CENTRE AREA  
 TO SUIT HD40-50  
 R-X-F MODELS  
 - INCLUDES  
 HARDWARE.

Price:  
**\$68 +GST**



Code: S56  
**OEM Code:**  
**MACDON**  
**151551**  
 STAINLESS STEEL  
 3MM SKID PLATE  
 FOR TRANSITION  
 PAN SUIT  
**MACDON** D60-FD1  
 SERIES

Price:  
**\$187 +GST**



Code: S202  
 SUIT JOHN DEERE  
 640-740 FLEX  
 HEADER FRONTS.  
 STAINLESS STEEL  
 5MM LEFT HAND  
 SKID PLATE  
 TO SUIT **JOHN**  
**DEERE** FLEX  
 FRONT - INCLUDES  
 HARDWARE.

Price:  
**\$575 +GST**

# STAINLESS STEEL HARVEST PARTS



Price:  
**\$575 +GST**

Code: S203  
SUITS JOHN DEERE 640-740 FLEX HEADER FRONTS. STAINLESS STEEL 5MM RIGHT HAND SKID PLATE TO SUIT **JOHN DEERE FLEX FRONT** - INCLUDES HARDWARE.



Price:  
**\$350 +GST**

Code: S25  
OEM Code: XTD001  
**JOHN DEERE 936** UNDER BOTTOM FRONT PAN BOLT ON AND PLUG WELD REPAIR 3MM STAINLESS



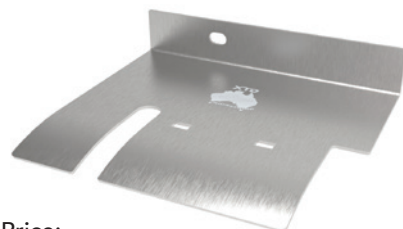
Price:  
**\$160 +GST**

Code: S26  
OEM Code: XTD002  
**JOHN DEERE 936** 2MM STAINLESS UNDER BELT REPAIR CHANNEL PLUG WELD



Price:  
**\$495 +GST**

Code: S45  
OEM Code: JOHN DEERE AE56948  
STAINLESS STEEL 8MM MOWER SKID PLATE FOR **JOHN DEERE MOCO 946-956** (QTY 2 REQUIRED)



Price:  
**\$250 +GST**

Code: S106  
**JOHN DEERE** COMBINE ROTOR WEAR PLATE FOR LEFT HAND FRONT ROTOR FRAME TO REDUCE WEAR.



Price:  
**\$215 +GST**

Code: S111  
JOHN DEERE POWERCAST CHAFF SPINNER SMALL 6MM ALLOY REPLACEMENT DISC SUIT **JOHN DEERE** COMBINE.



Price:  
**\$405 +GST**

Code: S102  
STAINLESS STEEL LEFT HAND CHAFF DEFLECTORS FOR **JOHN DEERE** HEADERS REPLACES RUBBER MATS OEM HXE108248.

Price:  
**\$250 +GST**

Code: S27  
OEM Code: XTD003  
STAINLESS STEEL 1.6MM PRESSED CHANNEL FOR **JOHN DEERE** HEADER GRAIN ELEVATOR REPAIR PANEL



Price:  
**\$45 +GST**

Code: S112  
JOHN DEERE STAINLESS DEFLECTOR 2MM. FULL REPLACEMENT DEFLECTOR FOR POWER CAST SPINNER SYSTEM ON **JOHN DEERE** COMBINE.



Price:  
**\$405 +GST**

Code: S103  
STAINLESS STEEL RIGHT HAND CHAFF DEFLECTORS FOR **JOHN DEERE** HEADERS REPLACES RUBBER MATS OEM HXE108248.



Price:  
**\$750 +GST**

Code: S114  
JOHN DEERE WEAR PLATE FOR FEEDER HOUSE. STAINLESS STEEL FOR EXTENDED WEAR SUIT **JOHN DEERE** COMBINE 9650STS - 9750STS.

## MACDON PARTS



Product Code: GH129297  
Name: Wearplate Macdon  
OEM Part No.: 129297  
Price: **\$14.00 +GST**



Product Code: GH76X45  
Name: Knife Guard bolts  
7/16x45mm & nut  
Price: **\$0.85 +GST**



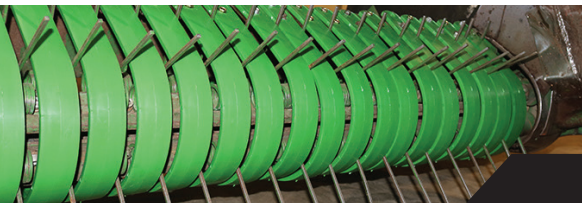
Product Code: GH132896  
Name: Macdon Knife Head (left)  
OEM Part No.: 132896  
Price: **\$160.00 +GST**

Product Code: GH132897  
Name: Macdon Knife Head (right)  
OEM Part No.: 132897  
Price: **\$160.00 +GST**



Product Code: GH132900  
Name: Nylon Reel Finger  
suits honey bee  
OEM: SP18,SP21,SP25,SP30,  
SP36,SP39,SP40,SP42  
Price: **\$4.00 +GST**

## POLY PICK UP BANDS



*Before poly band application.*



*After poly band application.*



*Fitting is quick and easy.*









*Case, Hesston, Massey, AGCO, Challenger,  
New Holland, John Deere*



# POLY PICK UP BANDS: COMPATIBLE MACHINES



PRODUCT NO	COMPATIBLE MACHINES	PRICE
 PBBSHS	<ul style="list-style-type: none"> <li>• <b>Agco Models:</b> 7433, 7434, 7444, 7423, 7424</li> <li>• <b>Challenger Sq. Models:</b> LB23, LB24, LB33, LB34, LB35</li> <li>• <b>Challenger Round Models:</b> RB46, RB56</li> <li>• <b>Massey Rd:</b> 2846, 2856, 2946, 2956</li> <li>• <b>Massey Sq. Models:</b> 2150, 2170, 2190, 2250, 2270, 2290, 2140, 2160</li> </ul>	\$52.00+GST
 PBTOJD-G	<ul style="list-style-type: none"> <li>• <b>John Deere Round Baler:</b> 330, 335, 375, 385, 430, 435, 447, 448, 449, 456, 458, 459, 466, 467, 468, 469, 535, 545, 546, 547, 550, 556, 558, 559, 566, 567, 568, 569, 570, 572, 580, 590, 592.</li> </ul>	\$52.00+GST
 PBTONH-B	<ul style="list-style-type: none"> <li>• <b>New Holland Square Baler:</b> 590, 590c, 595, BB940, BB960, BB9050, BB9060, BB9070, BB9080, 330, 340, LBX324, LB333, LB334, LB424, LB433, LB434, LBX322</li> <li>• <b>Case Square Baler:</b> LBX331, LBX332, LBX421, LBX422</li> </ul>	\$52.00+GST
 PBRONH-B	<ul style="list-style-type: none"> <li>• <b>New Holland Round Baler w/Extra Sweep Head - Outer:</b> BR7060, BR7090, BR7070, BR740, BR740A, BR750, BR750A, BR780, BR780A</li> <li>• <b>Case Round Baler:</b> RBX452, RBX453, RB454, RBX462, RBX463, RB464, RBX552, RBX562, RBX563, RB564</li> </ul>	\$52.00+GST
 PBRMNH-B	<ul style="list-style-type: none"> <li>• <b>New Holland Round Baler w/Extra Sweep Head - Middle:</b> BR7060, BR7090, BR7070, BR740, BR740A, BR750, BR750A, BR780, BR780A</li> <li>• <b>Case Round Baler:</b> RBX552, RBX562, RBX563, RBX564</li> </ul>	\$52.00+GST
 PBKRONE	<ul style="list-style-type: none"> <li>• <b>Krone Square Balers:</b> 1290 HPP2 8 String Baler 39 Bands</li> <li><b>OEMS:</b> 270024560</li> <li>1290 HPPHS 6 String Baler 39 Bands</li> </ul>	\$70.00+GST

## LONGER LASTING WEAR RESISTANT PRODUCTS

After a customer complained to us about rocks and other objects continually bending his metal pickup bands, we developed our poly pickup bands. Our bands are made from heavy, flexible, high impact poly that will withstand impacts without damage. If pickup tines do rub against the bands, they will not wear through nearly as quickly as with steel bands. In addition, hay feeds through much more smoothly and easily. The ½ inch thick bands have a ¼ inch support ring on the inside to strengthen and maintain shape. Longer bolts (included) are required to attach the poly bands.



# SPRINGS: MASSEY / HESTON



PRODUCT CODE	NAME	COMPATIBLE MACHINES	PRICE	POLY PICK UP BANDS
--------------	------	---------------------	-------	--------------------



**S62**  
Pickup Tine  
**SQUARE BALER**

**DIMENSIONS:**  
A - 155  
B - 60  
C - 55

- 2170
- 2190
- 2270
- 2290

\$6.80  
+GST

**PRODUCT CODE:**  
PBBSHS\*

**PRICE:**  
\$52.00+GST



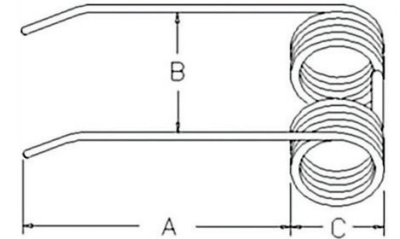
**S63**  
Pickup Tine  
**SQUARE BALER**

**DIMENSIONS:**  
A - 170  
B - 80  
C - 35

- 4900 Heston
- 187 Massey
- Case 8590
- 190

\$6.80  
+GST

**DIMENSIONS DIAGRAM:**



# SPRINGS: KRONE

PRODUCT CODE	NAME	COMPATIBLE MACHINES	PRICE	POLY PICK UP BANDS
--------------	------	---------------------	-------	--------------------



**S65**  
Pickup Tine  
**SQUARE BALER**

**DIMENSIONS:**  
A - 120  
B - 50  
C - 35

- HDP 1290 Krone

\$6.80  
+GST

**PRODUCT CODE:**  
PBKRONE

**PRICE:**  
\$70.00+GST



**S66**  
Pickup Tine  
**SQUARE BALER**

**DIMENSIONS:**  
A - 140  
B - 50  
C - 40

- HDP 1290 Krone  
High Speed

\$6.80  
+GST



**S79**  
Pickup Tine  
**SQUARE BALER**

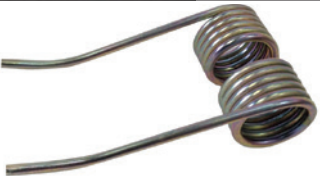






**DIMENSIONS:**  
A - 140  
B - 50  
C - 40

- Krone HDP 1290  
8 Stringer

\$6.80  
+GST

# SPRINGS: NEW HOLLAND



PRODUCT CODE	NAME	COMPATIBLE MACHINES	PRICE	POLY PICK UP BANDS
 <b>S77</b> DIMENSIONS: A - 110 B - 60 C - 40	Pickup Tine <b>SQUARE BALER</b>	<ul style="list-style-type: none"> <li>New Holland BB</li> <li>Square Baler</li> <li>BB: 920, 930, 940, 950, 960, 9060, 9070, 9080</li> </ul>	\$6.80 +GST	<b>PRODUCT CODE:</b> PBTONH-B* <b>PRICE:</b> \$52.00+GST 
 <b>S87</b>	Pickup Tine <b>SQUARE BALER</b>	<ul style="list-style-type: none"> <li>1290 Plus</li> </ul>	\$6.80 +GST	
 <b>S67</b> DIMENSIONS: A - 150 B - 60 C - 40	Pickup Tine End <b>ROUND BALER</b>	<ul style="list-style-type: none"> <li>BR + RBX Balers</li> </ul>	\$6.80 +GST	<b>PRODUCT CODE:</b> PBRONH-B (end)* <b>PRICE:</b> \$52.00+GST 
 <b>S68</b> DIMENSIONS: A - 140 B - 65 C - 35	Pickup Tine Middle <b>ROUND BALER</b>	<ul style="list-style-type: none"> <li>BR + RBX Balers</li> </ul>	\$6.80 +GST	<b>PRODUCT CODE:</b> PBRMNH-B (mid)* <b>PRICE:</b> \$52.00+GST 



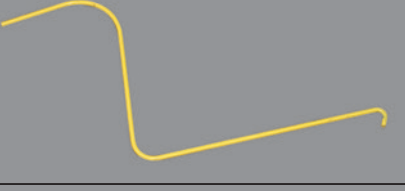
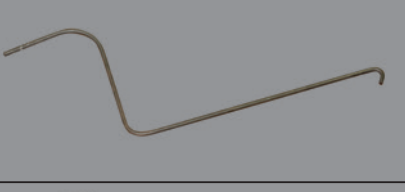

# SPRINGS: JOHN DEERE

 <b>S88</b> DIMENSIONS: A - 150 B - 60 C - 45	Pickup Tine Middle Heavy Duty <b>ROUND BALER</b>	<ul style="list-style-type: none"> <li>John Deere Round Baler: 446, 447, 448, 456, 457, 458, 466, 467, 468, 546, 547, 556, 557, 558, 566, 567, 568</li> </ul>	\$7.50 +GST	<b>PRODUCT CODE:</b> PBTOJD-G* <b>PRICE:</b> \$52.00+GST
 <b>S74</b> A - 135 C - 60	Pickup Tine Right Hand <b>ROUND BALER</b>	<ul style="list-style-type: none"> <li>John Deere Round Baler: 446, 447, 448, 456, 457, 458, 466, 467, 468, 546, 547, 556, 557, 558, 566, 567, 568</li> </ul>	\$8.25 +GST	
 <b>S75</b> A - 135 C - 60	Pickup Tine Left Hand			
 <b>S78</b> DIMENSIONS: A - 150 B - 60 C - 35	Pickup Tine with regular pickup <b>ROUND BALER</b>	<ul style="list-style-type: none"> <li>John Deere Round Baler: 335, 375, 385, 435, 446, 447, 456, 457, 466, 447, 456, 457, 466, 467, 535, 546, 547, 556, 557, 566, 67 th</li> </ul>	\$5.75 +GST	

\* see page 6 for more details of compatible machines

# HAY RAKES: Z RAKE TINES



		PRODUCT CODE	NAME	COMPATIBLE MACHINES	PRICE
<b>VICON</b>		<b>S69</b>	Z Rake Tine	• Vicon	\$4.10 +GST
<b>K-LINE AG</b>		<b>S89</b>	Z Rake Tine	• KLine	\$4.10 +GST
<b>SITREX</b>		<b>S70</b>	Z Rake Tine	• Sitrex	\$4.10 +GST
<b>SCHINCKEL HAYRAKES</b>		<b>S64</b>	Z Rake Tine	• Taege (Schinckel) • John Shearer	\$4.10 +GST
<b>TITAN ENGINEERING</b>		<b>S90</b>	Z Rake Tine	• Wilkins	\$4.10 +GST

To suit these leading brands

FOR SCHINCKEL RAKES:

PLASTIC WIND GUARD: **S85**  
\$50.00 +GST

OUTSIDE RING: **S86**  
\$75.00 +GST



# HAY RAKES: RUBBER TINES



WILL REPLACE OEM PART No CODE NAME COMPATIBLE MACHINES PRICE MEASUREMENTS (MM)

NEW HOLLAND



139041  
850614

**S71** Rubber Rake Tine  
Right Hand

• New Holland  
Rolabar Rake

\$7.20  
+GST

1. 7mm  
2. 261.62mm  
3. 10mm  
4. 52mm



65668  
850613

**S72** Rubber Rake Tine  
Left Hand

• New Holland  
Rolabar Rake

\$7.20  
+GST



9847572

**S84** Rubber Rake Tine

• New Holland  
Hayheads

\$10.00  
+GST

1. 6mm  
2. 190mm  
3. 8.6mm  
4. 26.7mm

VERMEER



**S80** Rubber Rake Tine 9"

• R-23, R-24

\$7.20  
+GST

1. 7mm  
2. 233.68mm  
3. 9.9mm  
4. 48.31mm

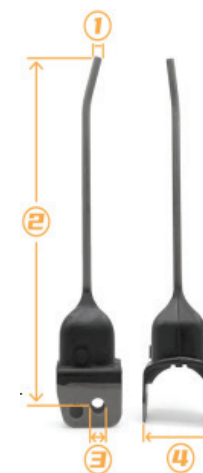


**S81** Rubber Rake Tine 10"

• R-2300, R2400,  
R-2800

\$7.20  
+GST

1. 7mm  
2. 248.92mm  
3. 10mm  
4. 42.24mm



JOHN DEERE



EF288601  
AE56204

**S76** Rubber Rake Tine

• John Deere Rake

\$7.20  
+GST

1. 7mm  
2. 251.46mm  
3. 9.40mm  
4. 41.80mm



2117RH  
400341  
491478

**S83** Rubber Rake Tine

• Wheel Rakes  
• Sitrex Pro 17 Rake  
• Delta Hay Pro

\$10.00  
+GST

1. 7mm  
2. 170mm  
3. 10.5mm  
4. 28.5mm



RAISING THE BAR

FOR SALES CONTACT:

TEL: 08 9337 7919

UNIT 1/22 SPHINX WAY BIBRA LAKE WA 6163

EMAIL: SALES@GROUNDHOG.COM.AU

  [WWW.GROUNDHOG.COM.AU](http://WWW.GROUNDHOG.COM.AU)

#### WARRANTY INFORMATION

As the selection, set-up and use of tillage and seeding equipment is affected by variables beyond our control, neither the Manufacturer nor any persons employed on its behalf including dealers or agents are liable for any loss or damage, whether consequential or otherwise, resulting from the use of its products. Warranty may / may not apply where any product is used for other than its intended and recommended purpose, or is subjected to pressures, loads or conditions beyond that for which it is designed. Should a product not perform its intended or recommended function, contact Groundhog Industries.

